

ENGINE	STD	OPT
--------	-----	-----

Hyundai HM8.3 Engine	●	
----------------------	---	--

HYDRAULIC SYSTEM	STD	OPT
------------------	-----	-----

Intelligent Power Control (IPC)		
3-power mode, 2-work mode, user mode	●	
Variable power control	●	
Pump flow control	●	
Engine auto idle	●	

CAB & INTERIOR	STD	OPT
----------------	-----	-----

ISO Standard Cabin		
Rise-up type windshield wiper	●	
Radio / USB player	●	
Handsfree mobile phone system with USB	●	
12 V power outlet (24 V DC to 12 V DC converter)	●	
Electric horn	●	
All-weather steel cab with 360° visibility	●	
Safety glass windows	●	
Sliding fold-in front window	●	
Sliding side window (LH)	●	
Lockable door	●	
Hot & Cool box	●	
Storage compartment & Ashtray	●	
Sun visor	●	
Door and cab locks, one key	●	
Pilot-operated slidable joystick	●	
Cabin lights	●	

Automatic Climate Control		
Air conditioner & Heater	●	
Defroster	●	
Starting aid (air grid heater) for cold weather	●	

Centralized Monitoring		
8" LCD display - Normal type	●	
Engine speed or trip meter / Accel	●	
Engine coolant temperature gauge	●	
Max power	●	
Low speed / High speed	●	
Auto idle	●	
Overload	●	
Check engine	●	
Air cleaner clogging	●	
Indicators	●	
ECO gauges	●	
Fuel level gauge	●	
Hyd. oil temperature gauge	●	
Warnings	●	
Communication error	●	
Low battery	●	
Clock	●	

Seat		
Mechanical suspension without heater	●	

Cabin FOPS		
FOG (Falling object guard)	Front & Tops guard	●
ISO 10262 Level 2	Top guard	●

Cabin ROPS		
ROPS (Roll over protective structures)ISO 12117-2		●

SAFETY	STD	OPT
--------	-----	-----

Battery master switch	●	
Rearview camera		●
Six front working lights (4 boom mounted, 2 front frame mounted)	●	
Travel alarm	●	
Rear work lamp	●	
Automatic swing brake	●	
Boom holding system	●	
Arm holding system	●	
Two outside rearview mirror	●	
Safety lock valve for boom cylinder		●
Safety lock valve for Arm cylinder		●

OTHER	STD	OPT
-------	-----	-----

Booms		
6.45 m, 21' 2" Mono	●	
Arms		
2.65 m, 8' 7"	●	
Removable clean-out dust net for cooler	●	
Removable washer tank	●	
Fuel pre-filter	●	
Self-diagnostics system	●	
Hi-mate (Remote management system)	●	
Batteries (2 × 12 V × 160 AH)	●	
Fuel filler pump (50 l/min)		●
Single-acting piping kit (Breaker, etc.)		●
Accumulator for lowering work equipment	●	
Tool kit	●	

UNDERCARRIAGE	STD	OPT
---------------	-----	-----

Lower frame under cover (Normal)	●	
Track Shoes		
Triple grousers shoes (600 mm, 24")	●	

* Standard and optional equipment may vary. Contact your hyundai dealer for more information.
 The machine may vary according to international standards.
 * The photos may include attachments and optional equipment that are not available in your area.
 * Materials and specifications are subject to change without advance notice.
 * All imperial measurements rounded off to the nearest pound or inch.

Hyundai Construction Equipment India Pvt. Ltd.
 Plot No. A-2, M. I. D. C. Chakan, Phase II,
 Village: Khalumbre, Taluka: Khed, Dist: Pune - 410501
 E mail: hyundai.care@theconnectionsindia.com
 Tel.No.: 02135 301700 Fax No: 02135 301712 Toll Free No.: 1800 209 8600
 www.hyundaiindia.net @hceindia f /hyundaiindia.net/
 t @hyceindia | Hyundai Construction Equipment India Pvt Ltd

PLEASE CONTACT

www.hyundai-ce.com

May 2021

MOVING YOU FURTHER

HX360L

With Tier 2 / Stage II Engine Installed



*Photo may include optional equipment.

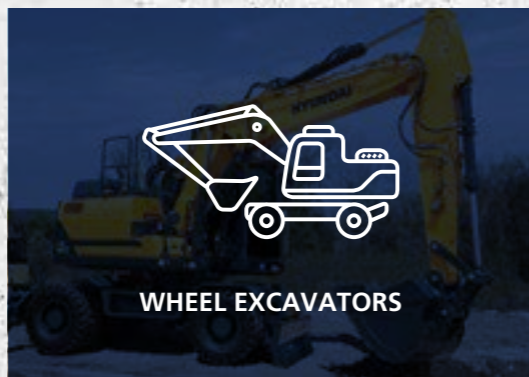
Max Power
265HP(198KW) @ 2000rpm

Travel Speed
5.0km/hr/3.1km/hr

Operating Weight
35500 - 36515 kg

HYUNDAI
CONSTRUCTION EQUIPMENT
INDIA

The HX Series Excavators are products of HCE's spirit of initiative, creativity, and strong drive. HCE's engineers, who are the best in the industry, have worked tirelessly to offer a zero-defect product. The new HX Series reflects customers' needs in the field gleaned by thorough monitoring. They maximize fuel efficiency and performance proven by rigorous field tests and quality control.



*Photo may include optional equipment.

RULE THE GROUND

HX360L

The HX Series exceeds customer's expectation!
Become a true leader on the ground with HCE's HX Series.



WORK MAX, WORTH MAX

- New Variable Power Control
- Fuel Rate Information (Option)
- IPC (Intelligent Power Control)
- Attachment Flow Control (Option)
- ECO Gauge
- New Cooling System with Increased Air Flow
- Enlarged Air Inlet with Grill Cover
- Cycle Time Improvement



MORE RELIABLE, MORE SUSTAINABLE

- Durable Cooling Module
- Reinforced Pin, Bush, and Polymer Shim
- Reinforced Durability of Upper and Lower Structure and Attachments
- Wear Resistant Cover Plate
- Hi-grade (High-pressure) Hoses



INFOTAINMENT FRONTIER

- New Front Side Air Conditioning Systems
- Intelligent and Wide Cluster
- New Audio System



MODERN COMFORT, SIMPLE AND SAFE SOLUTION

- Rear view Camera System (Option)
- Hi-mate (Remote Management System)
- Cab Suspension Mount



*Photo may include optional equipment.



*Photo may include optional equipment.

New Variable Power Control

The HX Series minimizes equipment input and output control signals to improve fuel efficiency. Its three-stage power mode ensures the highest performance in any operating environment.



* P(power) mode : Maximizes speed and power of the equipment for heavy load work.



* S(standard) mode : Optimizes performance and fuel efficiency of the equipment for general load work.



* E(economy) mode : Improves the control system for light load work.

WORK MAX, WORTH MAX

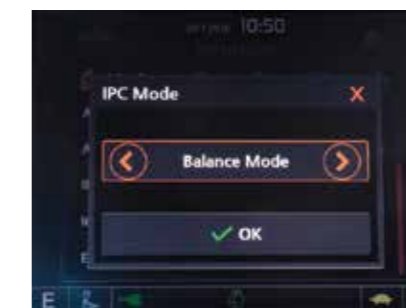
Fuel Efficient System, Allows Great Performance

The HX Series has an eco-friendly, high-performance engine which ensures both excellent fuel efficiency and high power. With outstanding operating performance proven by rigorous tests at various work sites, it will satisfy any customer's needs.

15% increased greater screen from 7 to 8 inch is applied in HX Series. More functions and better resolution are available with adding premium options.



Fuel Rate Information



IPC (Intelligent Power Control)

The IPC controls power depending on work environments. Its mode can be selected and released on the monitor. On the excavation mode, pump flow can be easily controlled by a lever, reducing fuel consumption.



Attachment Flow Control (Option)

The HX Series improves pump flow rate by independent control of two pumps. It optimizes attachments for effective flow rate setting depending on attachments (ten breaker types and ten crusher types), enabling various operations matching the site environments.



Eco Gauge

Eco gauge enables economic operation of machines. The gauge level and color displays engine torque and fuel efficiency level. On top of that, the status of fuel consumption such as average rate and the total amount of fuel consumed is displayed. - Hourly and daily based fuel consumption can be checked in the detailed menu as well.



New Cooling System with Increased Air Flow

With the cooling module improving air inflow, the HX Series provides excellent cooling performance by increasing heat dissipation.



Enlarged Air Inlet with Grill Cover

Enlarged vent hole of the air inlet side cover and fine net grill to prevent penetration of foreign materials further improve durability.

Cycle Time Improvement

The HX Series provides higher productivity on the site by faster operation: it loads trucks up to 10% faster and levels up to 16% faster than the 9S Series.

MORE RELIABLE, MORE SUSTAINABLE

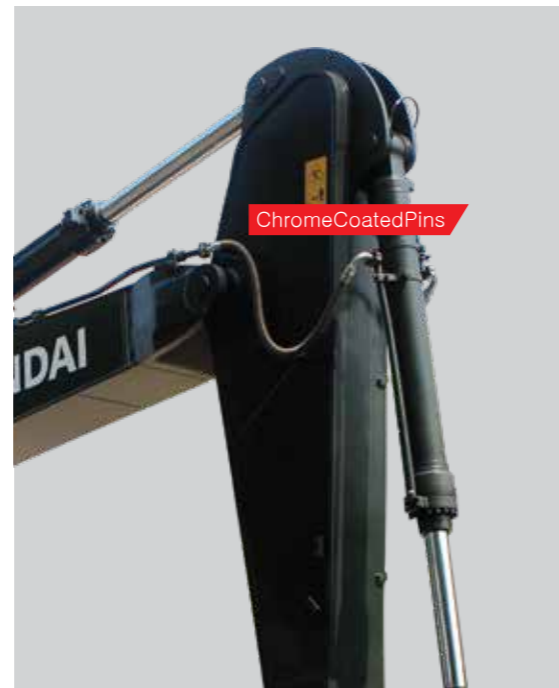
New Exterior Design for Robustness and Safety

The true value of the HX Series lies in its durability. The robust frame structure and the attachments show the real value of the HX Series in tough working environments and promise higher productivity.



Durable Cooling Module

The HX Series has a durable cooling module that passed stringent tests, demonstrating the highest productivity in tough working environments.



Reinforced Pin, Bush, and Polymer Shim

The HX Series improves lubricity of connecting parts between the equipment and attachments. Gaps with attachments are minimized by wear-resistant long-life pins, bushes, and polymer shims, supporting the highest performance with invariable durability.

Wear Resistant Cover Plate

A wear-resistant cover plate is installed at the end of the arm to minimize abrasion on the connector between the arm and the bucket. Vibration reduction of buckets enables more stable operation even in high-load work.



Reinforced Durability of Upper and Lower Structure and Attachments

The upper and lower structure and attachments of the HX Series have higher durability than demanded on the site, as proven through numerous tests including load tests and virtual simulation. The wear resistance of the bucket has been improved by use of new material.

Hi-grade (High-pressure) Hoses

The HX Series uses high-pressure hoses with improved heat and pressure resistance, greatly increasing the durability of the equipment.



New Front Side Air-conditioning System

The ventilation is designed for both warm and cool air reaching to operators' faces. It could help operators create more neat and enjoyable atmosphere through indoor air circulation.

INFOTAINMENT FRONTIER

Improved Instrument Panel for Easier Monitoring

Many electronic functions are concentrated in the most convenient spot for operators to improve work efficiency. The highly-advanced infotainment system, a product of HCE's intensive information technology development, enables both productivity and comfort while working! The HX Series is designed with the operator in mind.



Intelligent and Wide Cluster

The 8-inch interactive touch screen display of the HX Series is 15% larger than that of the previous model. The centralized switches on the display allow the operator to check the temperature outside the cab.



New Air Conditioning System

Front side Air Vent holes make operators more convenient and fresh through direct air flow to driver's face, foot and body.



Proportional Auxiliary Hydraulic System (Option)

Proportional control switch for better speed control
• Enlarge the operation convenience

Wi-Fi Direct with Smart Phone (Miracast) (Option)

The smart terminal-miracast system uses the Wi-fi from the operator's smart phone to easily and conveniently enable features of the smart phone, such as navigating, surfing the web, watching videos, and listening to music, on the 8" screen. (Currently only available for Android phones.)



Front Side Air-Vent

Quick Coupler Button (Option)

Easy attachment replacement of equipment is available with quick coupler button.

New Audio System

The radio player with a USB-based MP3 player, an integrated Bluetooth hands-free feature, and a built-in microphone allow for phone calls while at work and in transit. The radio player is conveniently located on the right side of the operator to allow for improved access.



HiMATE

REMOTE MANAGEMENT SYSTEM

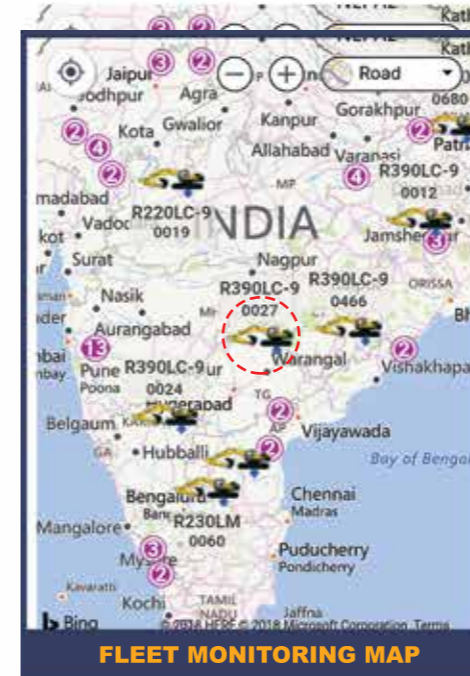
Our Unique remote management system allows customers to access machine operating information & obtain service & maintenance alerts at the touch of a button.

INCREASED PRODUCTIVITY

Hi MATE empowers you to enhance the efficiency of your operations. Make better decisions by comparing the machine's operating time with its travelling, idling & breaker use duration.

CONVENIENT & EASY MONITORING

Enjoy round the clock & on the move access to your machine's information through the website or the mobile app.



SECURITY & FLEET MONITORING

Protect your machines from theft or unauthorized use. Hi MATE's GPS feature allows you to create a geo-fence & alerts you if the machine moves out of the defined boundary.

Item	Maintenance Interval	Default	Setting	Total	At the last maintenance	Replace Date	Remainder time to next maintenance (h:m)	Alert level
Engine Oil	500	52	22	828	29-Mar-2019	180	12	
Travel Reduction Gear Case	1,000	300	0	400	15-Jan-2019	300	12	
Swing Reduction Gear Case	1,000	200	0	400	15-Jan-2018	400	12	
Hydraulic Oil	5,000	350	0	534	02-Feb-2019	80	12	
Filter Line Filter	1,000	220	0	540	02-Feb-2019	140	12	
Hydraulic Tank Drain Filter	1,000	250	0	540	02-Feb-2019	110	12	

PROACTIVE MAINTENANCE

Access your machine's service & maintenance history with the utmost convenience. Plan your service schedules intelligently with our regular reminders.

Date	Time	Hourmeter	Alarm Type	Alarm	Email Code (DTH)	Description	Callback
15-Apr-2019	07:16	510	W	101	101	Warning! Fuel level low	
14-Apr-2019	17:36	500	W	101	101	Warning! Fuel level low	
11-Apr-2019	11:23	481	W	101	101	Warning! Fuel level low	
10-Apr-2019	07:14	484	W	106	106	Warning! Battery voltage low	
08-Apr-2019	07:41	479	W	101	101	Warning! Fuel level low	
08-Apr-2019	06:58	479	W	101	101	Warning! Fuel level low	
06-Apr-2019	11:34	469	W	111	111	Warning! Engine Oil Pressure low	

ALARMS

Get notified of system alarms & protect your machine from critical faults & experience repairs.



RECEIVE LIVE NOTIFICATION THROUGH SMS & HIMATE APPLICATION ALERTS

SPECIFICATIONS

ENGINE	
Maker / Model	HYUNDAI HM8.3
Type	Watercooled, 4-cylinder diesel, 6-cylinders in line, direct injection, turbocharged, charger air cooled, low emission
Rated flywheel horse power	SAE J1995 (gross) 250 HP (186kW) at 2,200 rpm
	SAE J1349 (net) 245 HP (183kW) at 2,200 rpm
Max. Power	265 HP (198kW) at 2,000 rpm
Max. torque	124 kgfm (899 lbfft) at 1,300 rpm
Bore x Stroke	114 mm x 135 mm (4.49" x 5.31")
Piston displacement	8,290 cc (506 cu in)
Batteries	2 x 12 V x 160 Ah
Starting motor	24 V x 7.2 kW
Alternator	24 V x 90 A

HYDRAULIC SYSTEM	
MAIN PUMP	
Type	Variable displacement tandem axis piston pumps
Max. flow	2 x 315 l/min
Sub-pump for pilot circuit	Gear pump

Cross-sensing and fuel saving pump system.

HYDRAULIC MOTORS	
Travel	Two speed axial pistons motor with brake valve and parking brake
Swing	Axial piston motor with automatic brake

RELIEF VALVE SETTING	
Implement circuits	350 kgf/cm ² (4,980 psi)
Travel	350 kgf/cm ² (4,980 psi)
Powerboost(boom, arm, bucket)	380 kgf/cm ² (5,400 psi)
Swing circuit	300 kgf/cm ² (4,270 psi)
Pilot circuit	40 kgf/cm ² (570 psi)
Service valve	Installed

HYDRAULIC CYLINDERS	
No. of cylinder bore X stroke	Boom: 2-Ø150 x 1,480 mm Arm: 1-Ø170 x 1,685 mm Bucket: 1-Ø140 x 1,285 mm

DRIVES & BRAKES	
Drive method	Fully hydrostatic type
Drive motor	Axial piston motor, in-shoe design
Reduction system	Planetary reduction gear
Max. drawbar pull	32,011 kgf (70,572.17 lbf)
Max. travel speed (high / low)	5km/hr (3.1mph)/3.1km/hr(1.92mph)
Gradeability	35° (70%)
Parking brake	Multi wet disc

CONTROL	
Pilot pressure operated joysticks and pedals with detachable lever provide almost effortless and fatigueless operation.	
Pilot control	Two joysticks with one safety lever (LH): Swing and arm, (RH): Boom and bucket (ISO)
Traveling and steering	Two levers with pedals
Engine throttle	Electric, dial type

SWING SYSTEM	
Swing motor	Fixed displacement axial piston motor
Swing reduction	Planetary gear reduction
Swing bearing lubrication	Grease-bathed
Swing brake	Multi wet disc
Swing speed	11.2 rpm

COOLANT & LUBRICANT CAPACITY	
	liter
Fuel tank	580
Engine coolant	27
Engine oil	26.5
Swing device	6.0
Final drive (each)	8.0 (7.8)
Hydraulic system (including tank)	330
Hydraulic tank	190

UNDERCARRIAGE	
The X-leg type center frame is integrally welded with reinforced box-section track frames. The undercarriage includes lubricated rollers, idlers, track adjusters with shock absorbing springs and sprockets, and a track chain with triple grouser shoes.	
Center frame	X - leg type
Track frame	Pentagonal box type
No. of shoes on each side	48 EA
No. of carrier roller on each side	2 EA
No. of track roller on each side	8 EA
No. of rail guard on each side	2 EA

OPERATING WEIGHT (APPROXIMATE)	
Operating weight, including 6,450 mm (21' 2") boom, 2,650 mm (8' 7") arm, SAE heaped 1.44 m ³ (1.88 yd ³) bucket, lubricant, coolant, full fuel tank, full hydraulic tank, and all standard equipments.	
Shoes	
Type	Width mm
Triple grouser	600

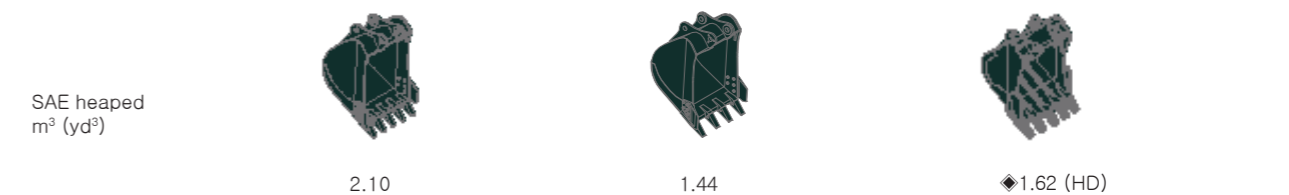
OPERATING WEIGHT			
Shoes	Width mm	Operating weight kg	Ground pressure kgf/cm ²
Triple grouser	600	35500 - 36515 kg	0.68 kg/cm ² (9.69 psi)

AIR CONDITIONING SYSTEM	
The air condition system for the machine contains the fluorinated greenhouse gas with global warming potential of R134a. (Global warming potential : 1,430)	
The system hold 0.8 kg refrigerant consisting of a CO ₂ equivalent 1.14 kg metric tonne. For more information, please refer to the manual.	

BUCKET SELECTION GUIDE & DIGGING FORCE

BUCKETS

All buckets are welded with high-strength steel.



Capacity m ³ (yd ³)	Width mm (in)	Weight kg (lb)	Tooth	Recommendation mm (ft-in)	
				6,450 (21' 2") Boom	2,650 (8' 7") Arm
SAE heaped 2.10 (2.75)				■	●
CECE heaped 1.44 (1.88)				●	●
◆ 1.62 (2.12)				●	●

- ◆ Heavy duty bucket
- Rock-Heavy duty bucket [Granite / Marble Bucket]
- : Applicable for materials with density of 2,100 kgf/m³ (3,500 lbf/yd³) or less
- : Applicable for materials with density of 1,500 kgf/m³ (2,500 lbf/yd³) or less

ATTACHMENT

Boom and arm are welded with a low-stress, full-box section design. 6.45m Boom and 2.65m Arm

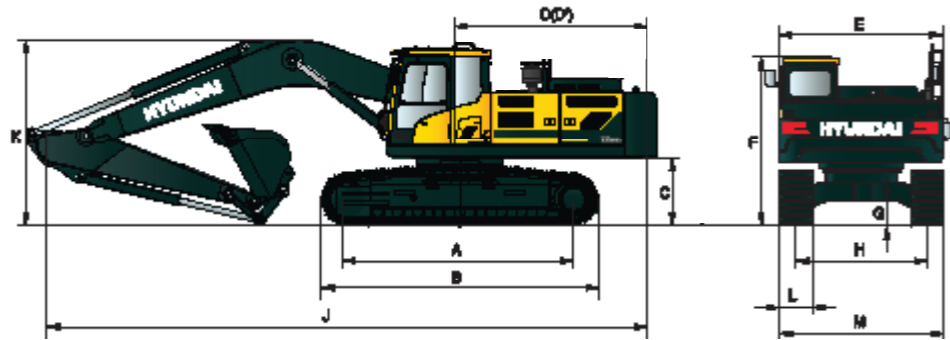
DIGGING FORCE				
Boom	Length	mm (ft-in)	6,450 (21' 2")	Remark
	Weight	kg (lb)	3,030 (6,680)	
Arm	Length	mm (ft-in)	2,650 (8' 7")	
	Weight	kg (lb)	1,257.5 (2,771)	
Bucket digging force	SAE	kN	187.3 [204.4]	[] : Power Boost
		kgf	19,100 [20,840]	
		lbf	42,110 [45,940]	
	ISO	kN	215.7 [235.4]	
		kgf	21,600 [23,450]	
		lbf	48,500 [52,910]	
Arm crowd force	SAE	kN	175.5 [191.5]	
		kgf	17,900 [19,530]	
		lbf	39,460 [43,060]	
	ISO	kN	184.4 [201.1]	
		kgf	19,400 [21,100]	
		lbf	41,450 [45,220]	

Note : Boom weight includes arm cylinder, piping, and pin
Arm weight includes bucket cylinder, linkage, and pin

DIMENSIONS & WORKING RANGE

HX360L DIMENSIONS

6.45 m (21' 2"), BOOM and 2.65 m (8' 7") ARM

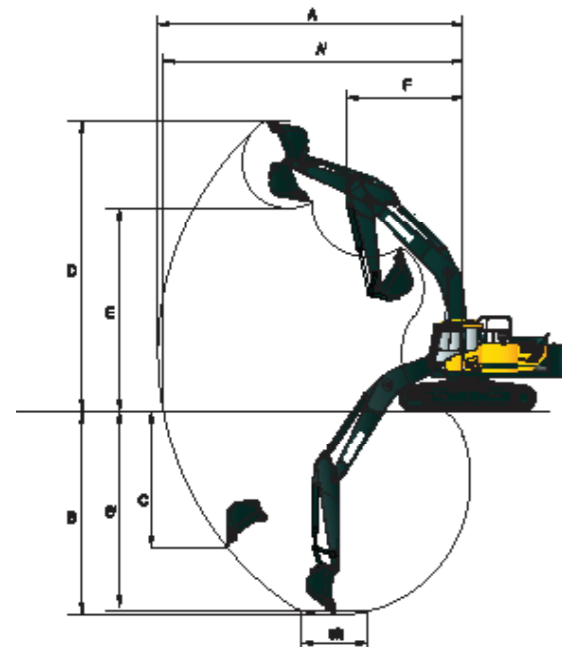


Unit : mm (ftin)

A	Tumbler distance	4,030 (13' 3")
B	Overall length of crawler	4,940 (16' 2")
C	Ground clearance of counterweight	1,200 (3' 11")
D	Tail swing radius	3,570 (11' 9")
D'	Rear-end length	3,510 (11' 6")
E	Overall width of upperstructure	2,980 (9' 9")
F	Overall height of cab	3,160 (10' 4")

G	Min. ground clearance	500 (1' 8")
H	Track gauge	2,590 (8' 5")
J	Overall length	11,340 (37' 2")
K	Overall height of boom	3,760 (12' 3")
L	Track shoe width	600 (24")
M	Overall width HX360L	3,190 (10' 5")

HX360L WORKING RANGE



Unit : mm (ftin)

A	Max. digging reach	10,710 (35' 1")
A'	Max. digging reach on ground	10,580 (34' 7")
B	Max. digging depth	6,820 (22' 4")
B'	Max. digging depth (8° level)	6,650 (21' 8")
C	Max. vertical wall digging depth	6,320 (20' 7")
D	Max. digging height	10,190 (33' 4")
E	Max. dumping height	7,120 (23' 4")
F	Min. swing radius	4,620 (15' 2")

LIFTING CAPACITY

Rating over-front Rating over-side or 360 degree

HX360L

6.45 m (21' 2") boom, 2.65 m (8' 7") arm equipped with 600 mm (24") triple grouser shoe and 6,000kg (13230 lb) counterweight

Load point height m (ft)		Load radius								At max. reach		
		3.0 m (9.8 ft)		4.5 m (14.8 ft)		6.0 m (19.7 ft)		7.5 m (24.6 ft)		Capacity	Reach	
												m (ft)
7.5 m (24.6ft)	kg									+8,500	7,230	7.09
	lb									+18,740	15,940	(23.3)
6.0 m (19.7ft)	kg					+9,000	+9,000	+8,450	6,530	+8,450	5,780	8.04
	lb					+19,840	+19,840	+18,630	14,400	+18,630	12,740	(26.4)
4.5 m (14.8ft)	kg			+13,280	+13,280	+10,340	8,980	+8,990	6,350	7,600	5,050	8.62
	lb			+29,280	+29,280	+22,800	19,800	+19,820	14,000	16,760	11,130	(28.3)
3.0 m (9.8 ft)	kg					+11,960	8,490	9,300	6,110	7,090	4,680	8.92
	lb					+26,370	18,720	20,500	13,470	15,630	10,320	(29.3)
1.5 m (4.9 ft)	kg					12,770	8,090	9,060	5,900	6,950	4,560	8.95
	lb					28,150	17,840	19,970	13,010	15,320	10,050	(29.3)
(0.0m) (0.0ft)	kg			+18,020	12,020	12,520	7,870	8,910	5,760	7,160	4,670	8.71
	lb			+39,730	26,500	27,600	17,350	19,640	12,700	15,790	10,300	(28.6)
-1.5 m (-4.9ft)	kg	+12,410	+12,410	+18,510	12,060	12,460	7,820	8,880	5,730	7,820	5,090	8.20
	lb	+27,360	+27,360	+40,810	26,590	27,470	17,240	19,580	12,630	17,240	11,220	(26.9)
-3.0 m (-9.8ft)	kg	+22,440	+22,440	+16,900	12,240	12,570	7,920			9,290	6,020	7.34
	lb	+49,470	+49,470	+37,260	26,980	27,710	17,460			20,480	13,270	(24.1)
-4.5 m (-14.8ft)	kg			+13,740	12,630					+9,970	8,280	5.99
	lb			+30,290	27,840					+21,980	18,250	(19.7)

- Lifting capacity are based on ISO 10567.
- Lifting capacity of the HX Series does not exceed 75% of tipping load with the machine on firm, level ground or 87% of full hydraulic capacity.
- The Lift-point is bucket pivot mounting pin on the arm (without bucket mass).
- (*) indicates load limited by hydraulic capacity.

