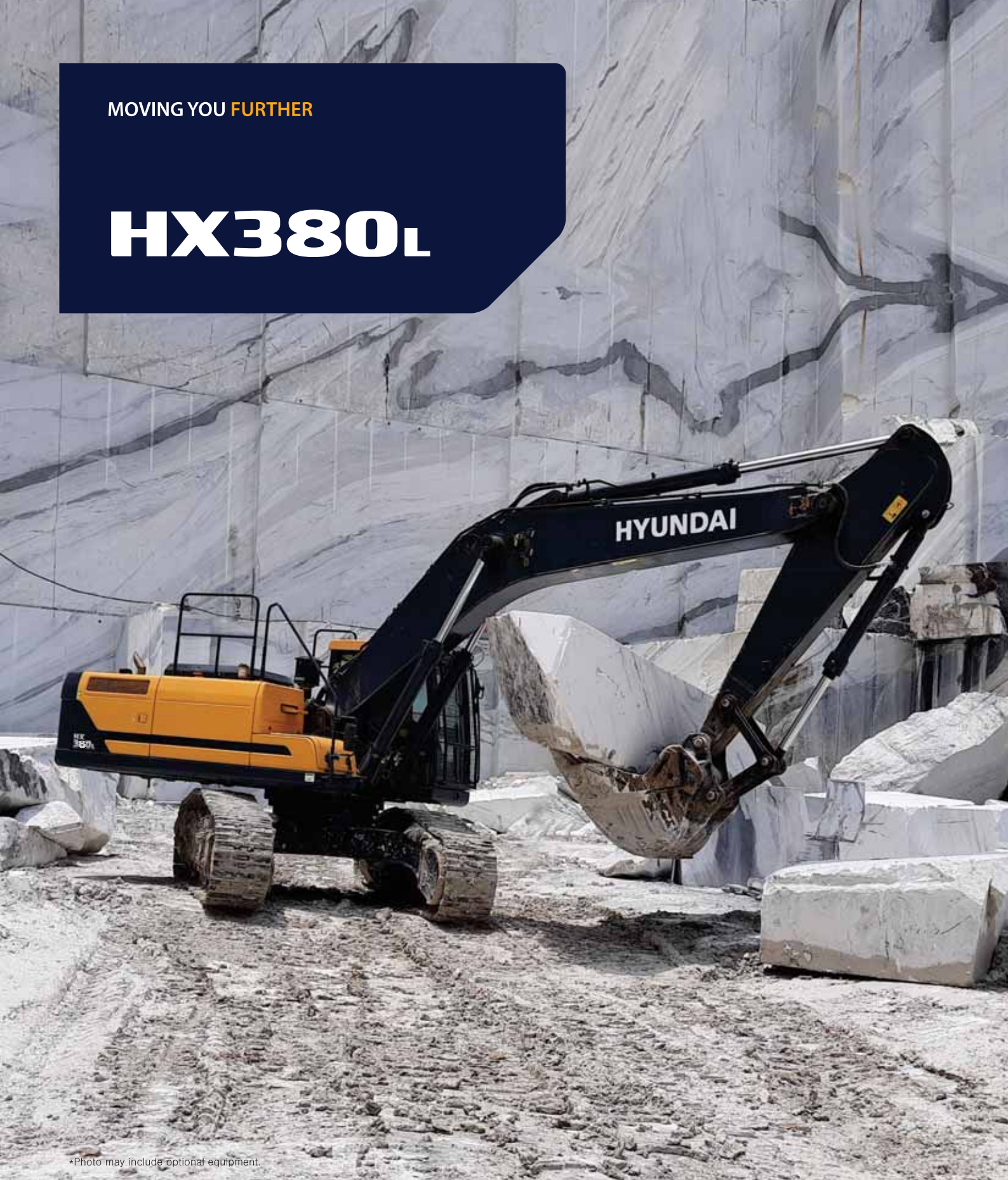


MOVING YOU FURTHER

# HX380L



\*Photo may include optional equipment.

Max Power  
265HP(198KW) @ 2000rpm

Travel Speed  
5.0km/hr/3.1km/hr

Operating Weight  
37200 kg

 **HYUNDAI**  
CONSTRUCTION EQUIPMENT  
INDIA





Marble Quarry



Iron Ore Mining



Granite Quarry



Stone Quarry



# RULE THE GROUND

# HX380L

The HX Series exceeds customer's expectation!  
 Become a true leader on the ground with HCE's HX Series.



## WORK MAX, WORTH MAX

- New Variable Power Control
- Fuel Rate Information (Option)
- IPC (Intelligent Power Control)
- Attachment Flow Control (Option)
- ECO Gauge
- New Cooling System with Increased Air Flow
- Enlarged Air Inlet with Grill Cover
- Cycle Time Improvement



## MORE RELIABLE, MORE SUSTAINABLE

- Durable Cooling Module
- Reinforced Pin, Bush, and Polymer Shim
- Reinforced Durability of Upper and Lower Structure and Attachments
- Wear Resistant Cover Plate
- Hi-grade (High-pressure) Hoses



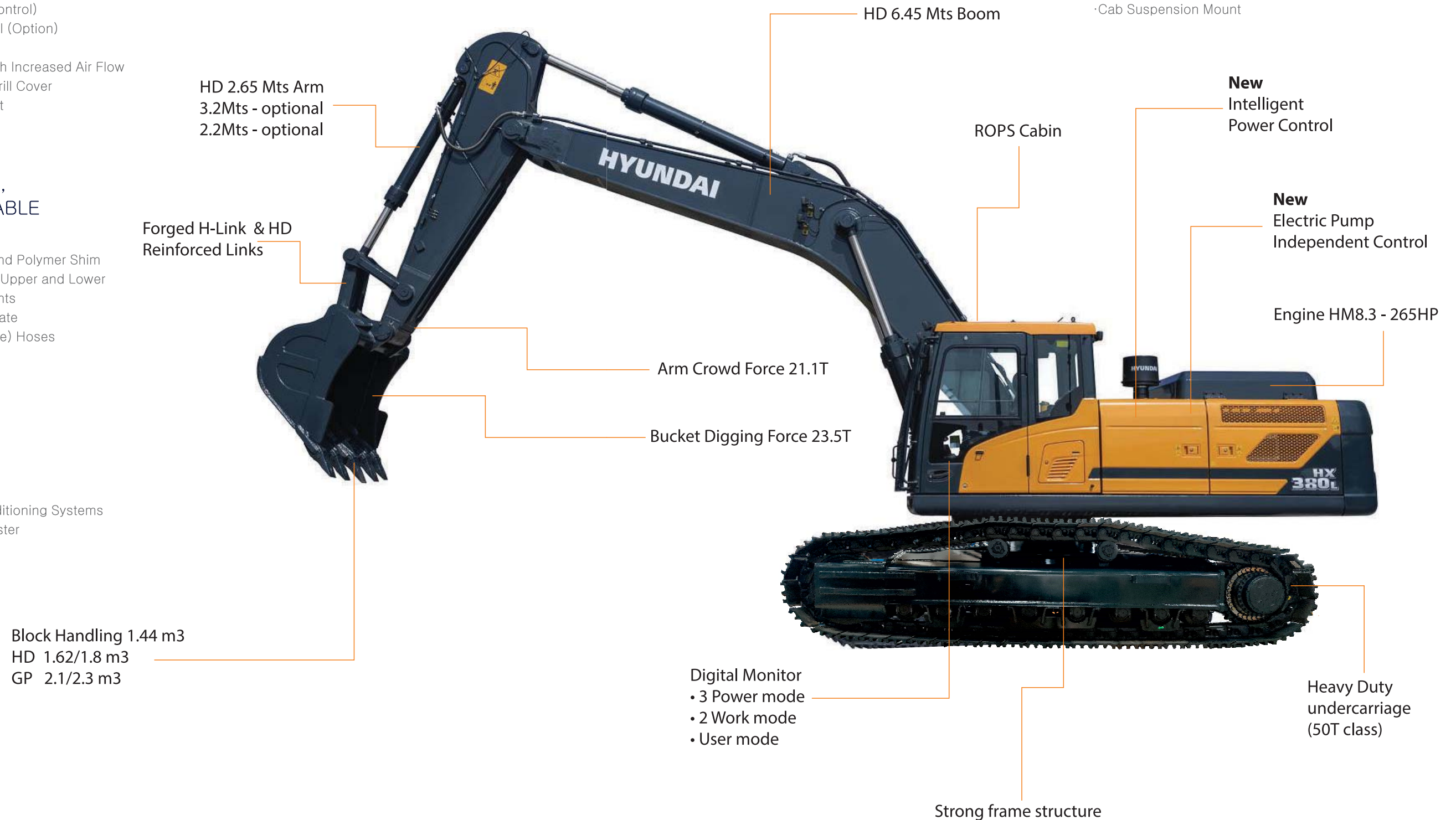
## INFOTAINMENT FRONTIER

- New Front Side Air Conditioning Systems
- Intelligent and Wide Cluster
- New Audio System



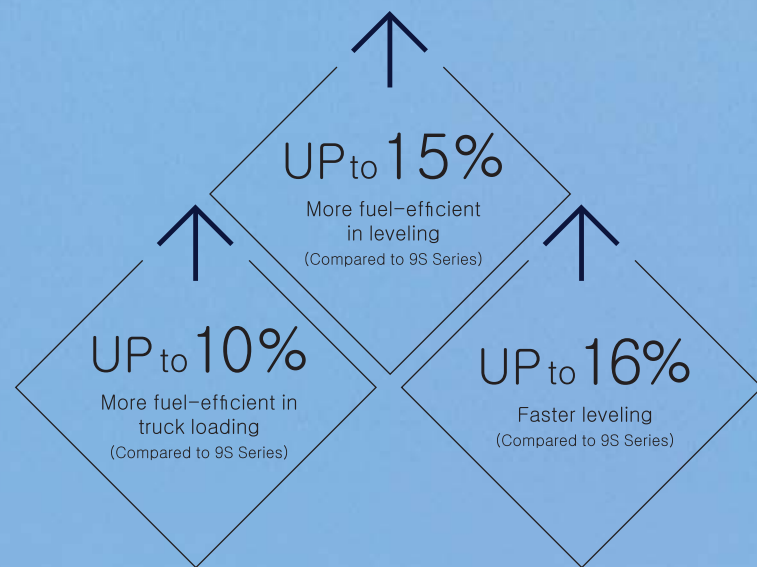
## MODERN COMFORT, SIMPLE AND SAFE SOLUTION

- Rear view Camera System (Option)
- Hi-mate (Remote Management System)
- Cab Suspension Mount



\*Photo may include optional equipment.





\*Photo may include optional equipment.

### New Variable Power Control

The HX Series minimizes equipment input and output control signals to improve fuel efficiency. Its three-stage power mode ensures the highest performance in any operating environment.



\* P(power) mode : Maximizes speed and power of the equipment for heavy load work.



\* S(standard) mode : Optimizes performance and fuel efficiency of the equipment for general load work.



\* E(economy) mode : Improves the control system for light load work.

# WORK MAX, WORTH MAX

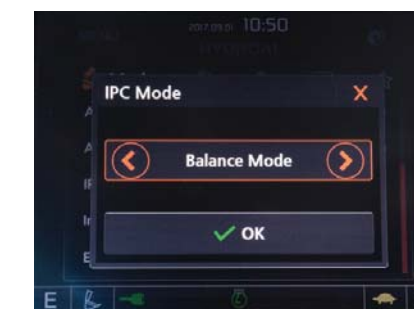
## Fuel Efficient System, Allows Great Performance

The HX Series has an eco-friendly, high-performance engine which ensures both excellent fuel efficiency and high power. With outstanding operating performance proven by rigorous tests at various work sites, it will satisfy any customer's needs.

15% increased greater screen from 7 to 8 inch is applied in HX Series. More functions and better resolution are available with adding premium options.



Fuel Rate Information



### IPC (Intelligent Power Control)

The IPC controls power depending on work environments. Its mode can be selected and released on the monitor. On the excavation mode, pump flow can be easily controlled by a lever, reducing fuel consumption.



### Attachment Flow Control (Option)

The HX Series improves pump flow rate by independent control of two pumps. It optimizes attachments for effective flow rate setting depending on attachments (ten breaker types and ten crusher types), enabling various operations matching the site environments.



### Eco Gauge

Eco gauge enables economic operation of machines. The gauge level and color displays engine torque and fuel efficiency level. On top of that, the status of fuel consumption such as average rate and the total amount of fuel consumed is displayed. Hourly and daily based fuel consumption can be checked in the detailed menu as well.



### New Cooling System with Increased Air Flow

With the cooling module improving air inflow, the HX Series provides excellent cooling performance by increasing heat dissipation.



### Enlarged Air Inlet with Grill Cover

Enlarged vent hole of the air inlet side cover and fine net grill to prevent penetration of foreign materials further improve durability.

### Cycle Time Improvement

The HX Series provides higher productivity on the site by faster operation: it loads trucks up to 10% faster and levels up to 16% faster than the 9S Series.



# MORE RELIABLE, MORE SUSTAINABLE

## New Exterior Design for Robustness and Safety

The true value of the HX Series lies in its durability. The robust frame structure and the attachments show the real value of the HX Series in tough working environments and promise higher productivity.



### Durable Cooling Module

The HX Series has a durable cooling module that passed stringent tests, demonstrating the highest productivity in tough working environments.



### Reinforced Pin, Bush, and Polymer Shim

The HX Series improves lubricity of connecting parts between the equipment and attachments. Gaps with attachments are minimized by wear-resistant long-life pins, bushes, and polymer shims, supporting the highest performance with invariable durability.

### Wear Resistant Cover Plate

A wear-resistant cover plate is installed at the end of the arm to minimize abrasion on the connector between the arm and the bucket. Vibration reduction of buckets enables more stable operation even in high-load work.



### Reinforced Durability of Upper and Lower Structure and Attachments

The upper and lower structure and attachments of the HX Series have higher durability than demanded on the site, as proven through numerous tests including load tests and virtual simulation. The wear resistance of the bucket has been improved by use of new material.

### Hi-grade (High-pressure) Hoses

The HX Series uses high-pressure hoses with improved heat and pressure resistance, greatly increasing the durability of the equipment.



### New Front Side Air-conditioning System

The ventilation is designed for both warm and cool air reaching to operators' faces. It could help operators create more neat and enjoyable atmosphere through indoor air circulation.

\*Photo may include optional equipment.



# INFOTAINMENT FRONTIER

## Improved Instrument Panel for Easier Monitoring

Many electronic functions are concentrated in the most convenient spot for operators to improve work efficiency. The highly-advanced infotainment system, a product of HCE's intensive information technology development, enables both productivity and comfort while working! The HX Series is designed with the operator in mind.



### Intelligent and Wide Cluster

The 8-inch interactive touch screen display of the HX Series is 15% larger than that of the previous model. The centralized switches on the display allow the operator to check the temperature outside the cab.



### New Air Conditioning System

Front side Air Vent holes make operators more convenient and fresh through direct air flow to driver's face, foot and body.

### Wi-Fi Direct with Smart Phone (Miracast) (Option)

The smart terminal-miracast system uses the Wi-fi from the operator's smart phone to easily and conveniently enable features of the smart phone, such as navigating, surfing the web, watching videos, and listening to music, on the 8" screen. (Current ly only available for Android phones.)



### Proportional Auxiliary Hydraulic System (Option)

Proportional control switch for better speed control  
·Enlarge the operation convenience



### Front Side Air-Vent

### Quick Coupler Button (Option)

Easy attachment/replacement of equipment is available with quick coupler button.

### New Audio System

The radio player with a USB-based MP3 player, an integrated Bluetooth hands-free feature, and a built-in microphone allow for phone calls while at work and in transit. The radio player is conveniently located on the right side of the operator to allow for improved access.



# HiMATE

## REMOTE MANAGEMENT SYSTEM

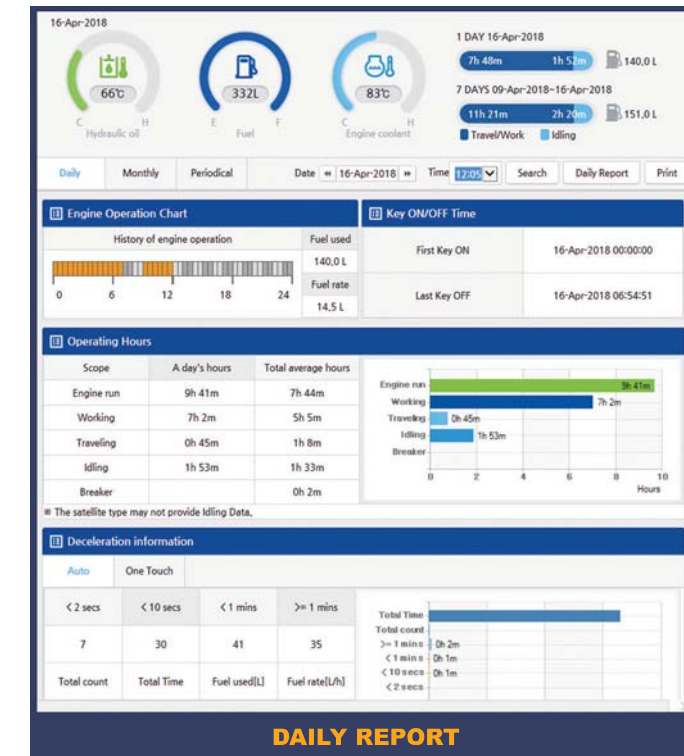
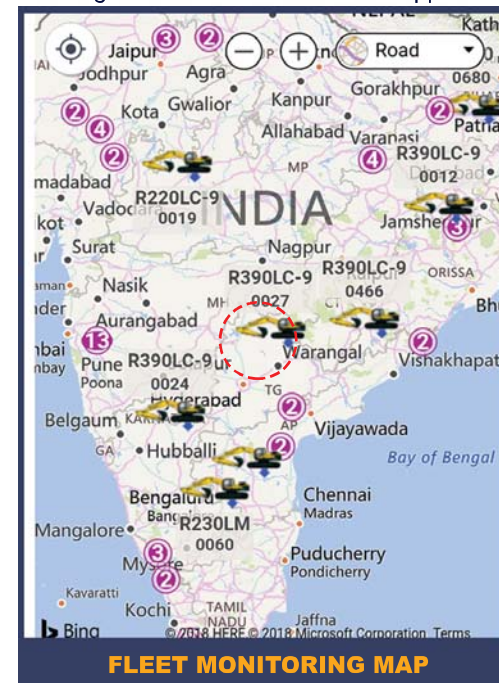
Our Unique remote management system allows customers to access machine operating information & obtain service & maintenance alerts at the touch of a button.

## INCREASED PRODUCTIVITY

HI MATE empowers you to enhance the efficiency of your operations. Make better decisions by comparing the machine's operating time with its travelling, idling & breaker use duration.

## CONVENIENT & EASY MONITORING

Enjoy round the clock & on the move access to your machine's information through the website or the mobile app.



## SECURITY & FLEET MONITORING

Protect your machines from theft or unauthorized use. HI MATE's GPS feature allows you to create a geo-fence & alerts you if the machine moves out of the defined boundary.

Maintenance Schedule									
Maintenance Interval(D)									
Item	Default	Setting	Total	At the last maintenance	Replace Date	Remaining time to next maintenance (D)	Alarm	Alarm	Error Code (SPN+)
Engine Oil	500	62	22	838	28-Mar-2018	100	+	+	303
Travel Reduction Gear Case	1,000	300	0	400	15-Jan-2018	300	+	+	303
Swing Reduction Gear Case	1,000	200	0	400	15-Jan-2018	400	+	+	303
Hydraulic Oil	5,000	350	0	554	07-Feb-2018	96	+	+	706
Pilot Line Filter	1,000	220	0	540	02-Feb-2018	240	+	+	303
Hydraulic Tank Drain Filter	1,000	250	0	540	02-Feb-2018	210	+	+	303

## PROACTIVE MAINTENANCE

Access your machine's service & maintenance history with the utmost convenience. Plan your service schedules intelligently with our regular reminders.

Alarm Notice							
Date	Time	Hourmeter	Alarm Type	Alarm	Error Code (SPN+)	Description	Casebook
15-Apr-2018	07:16	510	W	+	303	(Warning) Fuel level low	
14-Apr-2018	17:36	509	W	+	303	(Warning) Fuel level low	
11-Apr-2018	11:23	491	W	+	303	(Warning) Fuel level low	
10-Apr-2018	07:14	484	W	+	706	(Warning) Battery Voltage low	
08-Apr-2018	07:41	479	W	+	303	(Warning) Fuel level low	
08-Apr-2018	06:58	479	W	+	303	(Warning) Fuel level low	
06-Apr-2018	11:34	469	W	+	313	(Warning) Engine Oil Pressure low	

## ALARMS

Get notified of system alarms & protect your machine from critical faults & experience repairs.



**RECEIVE LIVE NOTIFICATION THROUGH SMS & HIMATE APPLICATION ALERTS**





# Parts & Support

## HYUNDAI GENUINE PARTS

Developed in synergy with our machines, Hyundai parts and lubricants ensure that you get the high levels of performance, reliability and safety that come with the complete Hyundai experience. Enjoy the confidence and assurance of the most stringent testing procedures and the high quality manufacturing processes safeguarding your machine's health. Experience the versatility of our 200+ strong outlet network across India

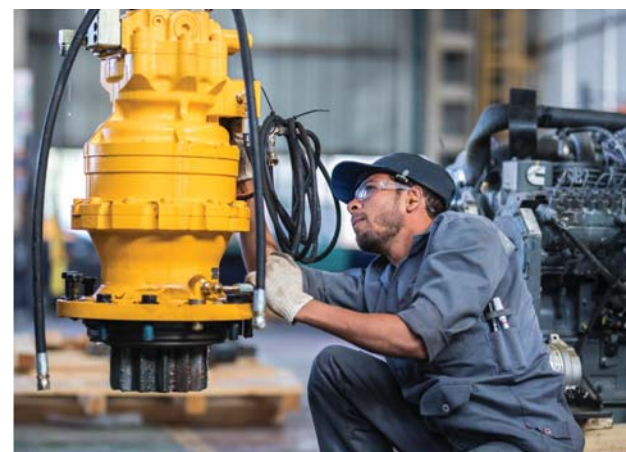
### WHY RISK IT?

Maximize profits and extend your machine's life.



## BENEFITS OF USING GENUINE HYUNDAI PARTS AND LUBRICANTS

- Genuine Hyundai Parts meet strict specifications and standards in Chemistry, Microstructure and Tensile Strength.
- Benefit from the continuous improvements and advancements made by Hyundai's technical team
- Improved performance of hydraulics and engine components
- Enjoy greater productivity with higher uptime
- Higher resale values
- Reduced oil consumption and unexpected breakdowns
- Enhanced component life



# SPECIFICATIONS

ENGINE		
Maker / Model	HYUNDAI HM8.3	
Type	Watercooled, 4-cylinder diesel, 6-cylinders in line, direct injection, turbocharged, charger air cooled, low emission	
Rated flywheel horse power	SAE J1995 (gross)	250 HP (186kW) at 2,200 rpm
	J1349 (net)	245 HP (183kW) at 2,200 rpm
Max. Power	265 HP (198kW) at 2,000 rpm	
Max. torque	124 kgfm (899 lbfm) at 1,300 rpm	
Bore × Stroke	114 mm × 135 mm (4.49" × 5.31")	
Piston displacement	8,290 cc (506 cu in)	
Batteries	2 × 12 V × 160 Ah	
Starting motor	24 V × 7.2 kW	
Alternator	24 V × 90 A	

HYDRAULIC SYSTEM	
MAIN PUMP	
Type	Variable displacement tandem axis piston pumps
Max. flow	2×315 l/min
Sub-pump for pilot circuit	Gear pump
Cross-sensing and fuel saving pump system.	

HYDRAULIC MOTORS	
Travel	Two speed axial pistons motor with brake valve and parking brake
Swing	Axial piston motor with automatic brake

RELIEF VALVE SETTING	
Implement circuits	350 kgf/cm <sup>2</sup> (4,980 psi)
Travel	350 kgf/cm <sup>2</sup> (4,980 psi)
Powerboost (boom, arm, bucket)	380 kgf/cm <sup>2</sup> (5,400 psi)
Swing circuit	300 kgf/cm <sup>2</sup> (4,270 psi)
Pilot circuit	40 kgf/cm <sup>2</sup> (570 psi)
Service valve	Installed

HYDRAULIC CYLINDERS	
No. of cylinder bore X stroke	Boom: 2-Ø150 × 1,480 mm
	Arm: 1-Ø170 × 1,685 mm
	Bucket: 1-Ø140 × 1,285 mm

DRIVES & BRAKES	
Drive method	Fully hydrostatic type
Drive motor	Axial piston motor, in-shoe design
Reduction system	Planetary reduction gear
Max. drawbar pull	32,011 kgf (70,572.17 lbf)
Max. travel speed (high / low)	5km/hr (3.1mph)/3.1km/hr(1.92mph)
Gradeability	35° (70%)
Parking brake	Multi wet disc

CONTROL	
Pilot pressure operated joysticks and pedals with detachable lever provide almost effortless and fatigueless operation.	
Pilot control	Two joysticks with one safety lever (LH): Swing and arm, (RH): Boom and bucket (ISO)
Traveling and steering	Two levers with pedals
Engine throttle	Electric, dial type

SWING SYSTEM	
Swing motor	Fixed displacement axial piston motor
Swing reduction	Planetary gear reduction
Swing bearing lubrication	Grease-bathed
Swing brake	Multi wet disc
Swing speed	11.2 rpm

COOLANT & LUBRICANT CAPACITY	
	liter
Fuel tank	580
Engine coolant	27
Engine oil	26.5
Swing device	6.0
Final drive (each)	8.0 (7.8)
Hydraulic system (including tank)	330
Hydraulic tank	190

UNDERCARRIAGE	
The X-leg type center frame is integrally welded with reinforced box-section track frames. The undercarriage includes 16.5mm track shoes lubricated rollers, idlers, track adjusters with shock absorbing springs and sprockets, and a track chain with triple grouser shoes.	
Center frame	X - leg type
Track frame	Pentagonal box type
No. of shoes on each side	48 EA
No. of carrier roller on each side	2 EA
No. of track roller on each side	8 EA
No. of rail guard on each side	3 EA

OPERATING WEIGHT (APPROXIMATE)	
Operating weight, including 6,450 mm (21' 2") boom, 2650mm (8' 7") arm, SAE heaped 1.44 m <sup>3</sup> (1.88 yd <sup>3</sup> ) bucket, counter weight 6600 kg lubricant, coolant, full fuel tank, full hydraulic tank, and all standard equipments.	

OPERATING WEIGHT			
Shoes	Width mm	Operating weight kg	Ground pressure kgf/cm <sup>2</sup>
Triple grouser	600	37200 kg	0.71 kg/cm <sup>2</sup> (10.1 psi)

AIR CONDITIONING SYSTEM	
The air condition system for the machine contains the fluorinated greenhouse gas with global warming potential of R134a. (Global warming potential : 1,430)	
The system hold 0.8kg refrigerant consisting of a CO <sub>2</sub> equivalent 1.14 kg metric tonne. For more information, please refer to the manual.	

# BUCKET SELECTION GUIDE & DIGGING FORCE

## BUCKETS

All buckets are welded with high-strength steel.



Capacity m <sup>3</sup> (yd <sup>3</sup> )	Width mm (in)	Weight kg (lb)	Tooth	Recommendation mm (ft-in)		
				6,450 (21' 2") Boom	6,450 (21' 2") Boom	6,450 (21' 2") Boom
SAE heaped	CECE heaped			2,650(8' 7") Arm	2,200(7' 2") Arm	3,200(10' 4") Arm
2.10 (2.75)	1.80 (2.35)	1,823	1,650(3,640)	5	■	●
⊠ 1.44(1.88)	1.25 (1.63)	1,278	1,485(3,270)	4	●	●
◆ 1.62(2.12)	1.40 (1.83)	1,540	1,570 (3,460)	5	●	●
2.3	2.02	1,746	1,830 (4,034)	6	■	■
◆ 1.8	1.6	1,556	1,722 (3,796)	5	●	●

- ◆ Heavy duty bucket
- ⊠ Rock-Heavy duty bucket [Granite / Marble Bucket]
- : Applicable for materials with density of 2,100kgf/m<sup>3</sup> (3,500lbf/yd<sup>3</sup>) or less
- : Applicable for materials with density of 1,500kgf/m<sup>3</sup> (2,500lbf/yd<sup>3</sup>) or less

## ATTACHMENT

Boom and arm are welded with a low-stress, full-box section design. 6.45m Boom and 2.65m Arm

## DIGGING FORCE

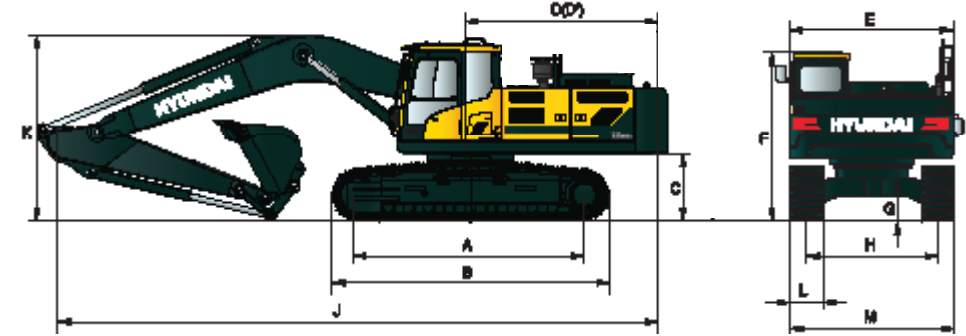
Boom	Length	mm (ft-in)	6,450 (21' 2")	Remark
	Weight	kg (lb)	3,030 (6,680)	
Arm	Length	mm (ft-in)	2,650 (8' 7")	
	Weight	kg (lb)	1,257.5 (2,771)	
Bucket digging force	SAE	kN	187.3 [204.4]	[ ] : Power Boost
		kgf	19,100 [20,840]	
		lbf	42,110 [45,940]	
	ISO	kN	215.7 [235.4]	
		kgf	21,600 [23,450]	
		lbf	48,500 [52,910]	
Arm crowd force	SAE	kN	175.5 [191.5]	
		kgf	17,900 [19,530]	
		lbf	39,460 [43,060]	
	ISO	kN	184.4 [201.1]	
		kgf	19,400 [21,100]	
		lbf	41,450 [45,220]	

Note : Boom weight includes arm cylinder, piping, and pin  
Arm weight includes bucket cylinder, linkage, and pin

# DIMENSIONS & WORKING RANGE

## HX380L DIMENSIONS

6.45 m (21' 2"), BOOM and 2.65 m (8' 7") ARM

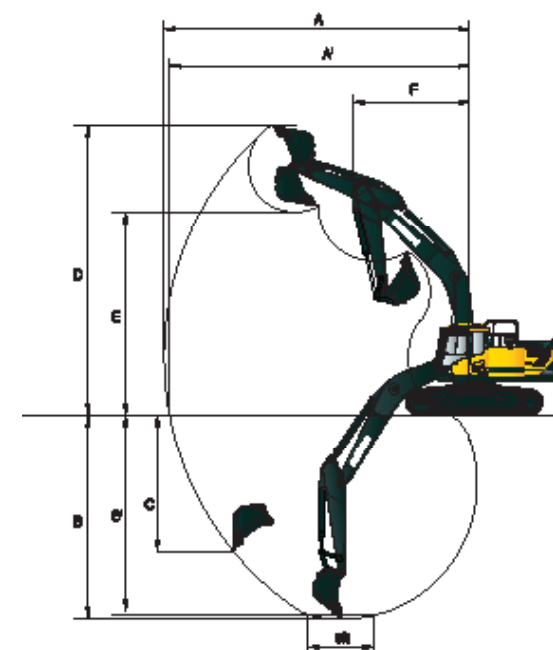


Unit : mm (ftin)

A Tumbler distance	4,030 (13' 3")
B Overall length of crawler	4,940 (16' 2")
C Ground clearance of counterweight	1,200 (3' 11")
D Tail swing radius	3,570 (11' 9")
D' Rear-end length	3,510 (11' 6")
E Overall width of upperstructure	2,980 (9' 9")
F Overall height of cab	3,160 (10' 4")

G Min. ground clearance	500 (1' 8")
H Track gauge	2,590 (8' 5")
J Overall length	11,340 (37' 2")
K Overall height of boom	3,760 (12' 3")
L Track shoe width	600 (24")
M Overall width HX360L	3,190 (10' 5")

## HX380L WORKING RANGE



Unit : mm (ftin)

A Max. digging reach	10,710 (35' 1")
A' Max. digging reach on ground	10,580 (34' 7")
B Max. digging depth	6,820 (22' 4")
B' Max. digging depth (8' level)	6,650 (21' 8")
C Max. vertical wall digging depth	6,320 (20' 7")
D Max. digging height	10,190 (33' 4")
E Max. dumping height	7,120 (23' 4")
F Min. swing radius	4,620 (15' 2")







# LIFTING CAPACITY

## LIFTING CHART (ISO CONDITION1)

6.45 m (21' 2") boom, 2.2m (7'2") arm equipped with 600 mm (24") triple grouser shoe and 6,600kg (13230 lb) counterweight

Load point height m (ft)	Load radius								At max. reach			
	3.0 m (9.8 ft)		4.5 m (14.8 ft)		6.0 m (19.7 ft)		7.5 m (24.6 ft)		Capacity	Reach		
										m (ft)		
7.5m	kg								*7740	7480	6.94	
24.6ft	lb								*17060	16490	(22.8)	
6.0m	kg					*8300	*8300	*7740	6420	*7710	5810	7.91
19.7ft	lb					*18300	*18300	*17060	14150	*17000	12810	(25.9)
4.5m	kg		*12400	*12400	*9570	8960	*8250	6200	7700	4960	8.50	
14.8ft	lb		*27340	*27340	*21100	19750	*18190	13670	16980	10930	(27.9)	
3.0m	kg				*11100	8370	*9010	5920	7120	4530	8.80	
9.8ft	lb				*24470	18450	*19860	13050	15700	9990	(28.9)	
1.5m	kg				*12380	7900	8980	5660	6940	4380	8.83	
4.9ft	lb				*27290	17420	19800	12480	15300	9660	(29.0)	
0.0m	kg		*18100	11850	12490	7650	8800	5500	7150	4490	8.59	
0.0ft	lb		*39900	26120	27540	16870	19400	12130	15760	9900	(28.2)	
-1.5m	kg		*17460	11900	12420	7590	8760	5470	7860	4930	8.07	
-4.9ft	lb		*38490	26230	27380	16730	19310	12060	17330	10870	(26.5)	
-3.0m	kg	*13840	*13840	*15900	12130	*12020	7710		9470	5940	7.20	
-9.8ft	lb	*30510	*30510	*35050	26740	*26500	17000		20880	13100	(23.6)	
-4.5m	kg	*21290	*21290	*12860	12590				*9720	8480	5.81	
-14.8ft	lb	*46940	*46940	*28350	27760				*21430	18700	(19.1)	

## LIFTING CHART (ISO CONDITION1)

Load point height m (ft)	Load radius								At max. reach			
	3.0 m (9.8 ft)		4.5 m (14.8 ft)		6.0 m (19.7 ft)		7.5 m (24.6 ft)		Capacity	Reach		
										m (ft)		
7.5m	kg					*9270	*9270		*9410	8410	6.71	
24.6ft	lb					*20440	*20440		*20750	18540	(22.0)	
6.0m	kg					*9770	*9770	*9170	6980	*9210	6650	7.71
19.7ft	lb					*21540	*21540	*20220	15390	*20300	14660	(25.3)
4.5m	kg					*11050	9550	*9550	6830	8600	5790	8.32
14.8ft	lb					*24360	21050	*21050	15060	18960	12760	(27.3)
3.0m	kg					*12560	9060	9930	6610	8020	5370	8.62
9.8ft	lb					*27690	19970	21890	14570	17680	11840	(28.3)
1.5m	kg					13580	8700	9710	6410	7880	5250	8.65
4.9ft	lb					29940	19180	21410	14130	17370	11570	(28.4)
0.0m	kg					13380	8530	9580	6300	8150	5420	8.41
0.0ft	lb					29500	18810	21120	13890	17970	11950	(27.6)
-1.5m	kg			*18050	13070	13360	8520	9590	6310	8980	5940	7.88
-4.9ft	lb			*39790	28810	29450	18780	21140	13910	19800	13100	(25.8)
-3.0m	kg	*20300	*20300	*16130	13290	*12440	8670			*10070	7120	6.98
-9.8ft	lb	*44750	*44750	*35560	29300	*27430	19110			*22200	15700	(22.9)
-4.5m	kg			*12300	*12300					*9490	*9490	5.54
-14.8ft	lb			*27120	*27120					*20920	*20920	(18.2)

## ENGINE

Hyundai HM8.3 Engine	●
----------------------	---

## HYDRAULIC SYSTEM

Intelligent Power Control (IPC)	
3-power mode, 2-work mode, user mode	●
Variable power control	●
Pump flow control	●
Engine auto idle	●

## CAB & INTERIOR

ISO Standard Cabin	
Rise-up type windshield wiper	●
Radio / USB player	●
Handsfree mobile phone system with USB	●
12 V power outlet (24 V DC to 12 V DC converter)	●
Electric horn	●
All-weather steel cab with 360° visibility	●
Safety glass windows	●
Sliding fold-in front window	●
Sliding side window (LH)	●
Lockable door	●
Hot & Cool box	●
Storage compartment & Ashtray	●
Sun visor	●
Door and cab locks, one key	●
Pilot-operated slidable joystick	●
Cabin lights	●

Automatic Climate Control	
Air conditioner & Heater	●
Defroster	●
Starting aid (air grid heater) for cold weather	●

Centralized Monitoring	
8" LCD display - Normal type	●
Engine speed or trip meter / Accel	●
Engine coolant temperature gauge	●
Max power	●
Low speed / High speed	●
Auto idle	●
Overload	●
Check engine	●
Air cleaner clogging	●
Indicators	●
ECO gauges	●
Fuel level gauge	●
Hyd. oil temperature gauge	●
Warnings	●
Communication error	●
Low battery	●
Clock	●

Seat	
Mechanical suspension without heater	●

Cabin FOPS	
FOG (Falling object guard) ISO 10262 Level 2	●
Front & Top guard	●
Top guard	●

Cabin ROPS	
ROPS (Roll over protective structures)ISO 12117-2	●
Front Cabin Guard	●

## SAFETY

Battery master switch	●
Rearview camera	●
Six front working lights (4 boom mounted, 2 front frame mounted)	●
Travel alarm	●
Rear work lamp	●
Automatic swing brake	●
Boom holding system	●
Arm holding system	●
Two outside rearview mirror	●
Safety lock valve for boom cylinder	●
Safety lock valve for Arm cylinder	●
Automatic fire suppression	●

## OTHER

Booms	
6.45 m, 21' 2" Mono	●
Arms	
2.65 m, 8'7"	●
3.2 m, 10'4", 2.2 m, 7'2"	●
Removable clean-out dust net for cooler	●
Removable washer tank	●
Fuel pre-filter	●
Self-diagnostics system	●
Hi-mate (Remote management system)	●
Batteries (2 x 12 V x 160 AH)	●
Fuel filler pump (50 #/min)	●
Single-acting piping kit (Breaker, etc.)	●
Accumulator for lowering work equipment	●
Tool kit	●
Centralized lubrication system	●

## UNDERCARRIAGE

Lower frame under cover (Normal)	●
Track Shoes	
Triple grousers shoes (600 mm, 24")	●

## STANDARD / OPTION LIST

- \* Standard and optional equipment may vary. Contact your Hyundai dealer for more information. The machine may vary according to international standards.
- \* The photos may include attachments and optional equipment that are not available in your area.
- \* Materials and specifications are subject to change without advance notice.
- \* All imperial measurements rounded off to the nearest pound or inch.





**HYUNDAI**  
**CONSTRUCTION EQUIPMENT**  
**INDIA**

---

Hyundai Construction Equipment India Pvt. Ltd.  
Plot No. A-2, M. I. D. C. Chakan, Phase II,  
Village: Khalumbre, Taluka: Khed, Dist: Pune - 410501  
E mail: [hyundai.care@theconnectionsindia.com](mailto:hyundai.care@theconnectionsindia.com)  
Tel.No.: 02135 301700 Fax No: 02135 301712 Toll Free No.: 1800 209 8600  
🌐 [www.hyundaiindia.net](http://www.hyundaiindia.net)    @ [@hceindia](https://www.instagram.com/hceindia)    f [/HyundaiCEIndia1](https://www.facebook.com/HyundaiCEIndia1)  
🐦 [@hyceindia](https://twitter.com/hyceindia)    in [Hyundai Construction Equipment India Pvt Ltd](https://www.linkedin.com/company/hyundai-construction-equipment-india-pvt-ltd)

PLEASE CONTACT

[www.hyundaiindia.net](http://www.hyundaiindia.net)

August 2021

---